

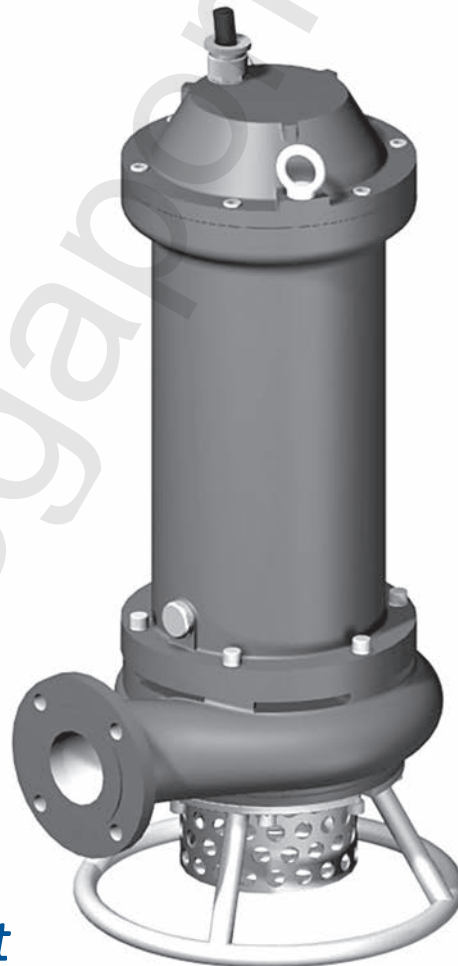


Grupa Powen-Wafapomp SA

SUBMERSIBLE PUMPS

NZ

Submersible pumps NZ are designed
to deal with water
containing solids and salt



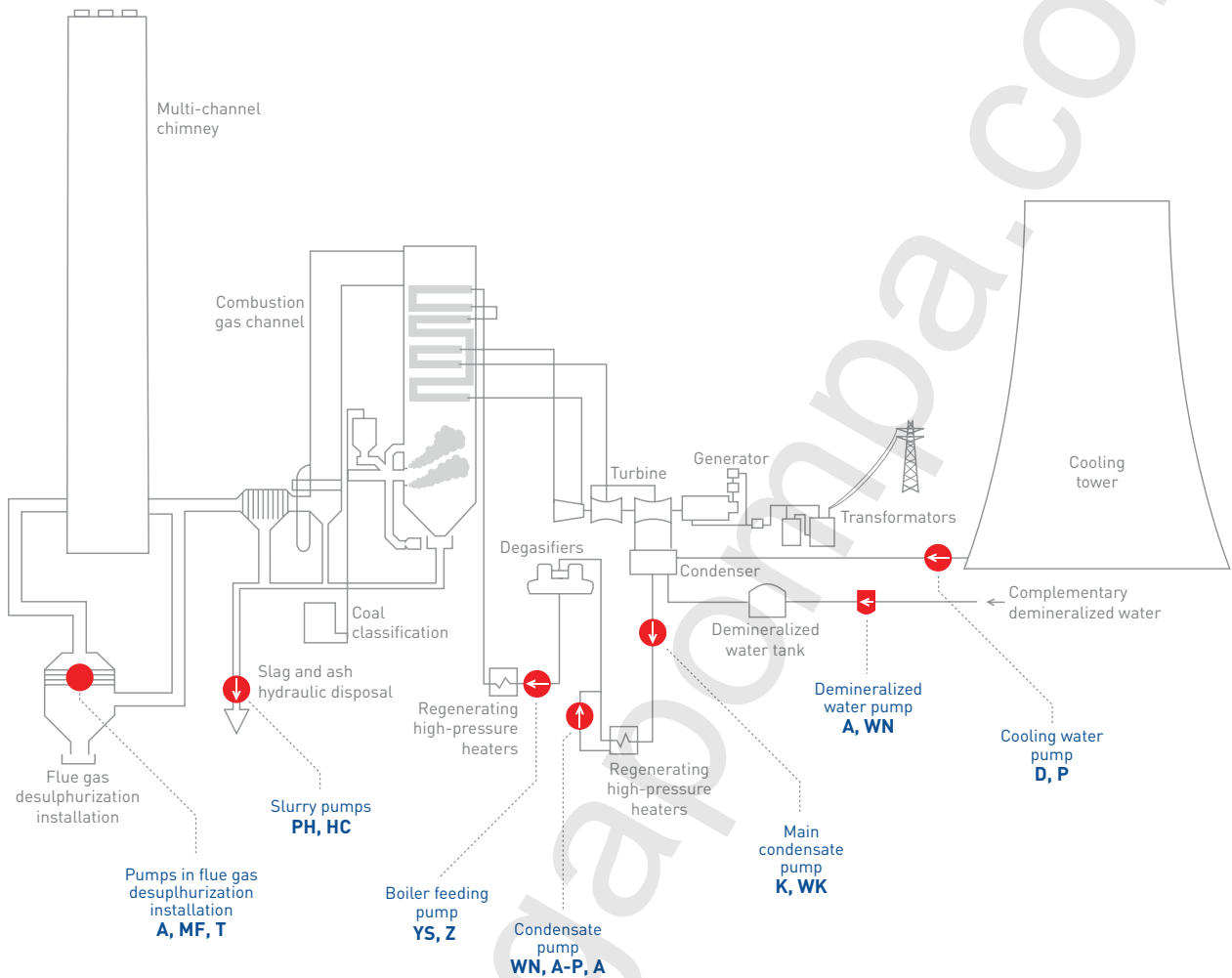
***Pumps for Power and Heat
Supplying Industries***

Please visit our web page <http://www.megapompa.com> or get in contact with us directly via +90 216 684 05 24 for further assistance about related application!



PUMPS IN A POWER PLANT AND HEAT GENERATING PLANT

examples of application



APPLICATION

Submersible pumps NZ type are designated to handle mixtures of water with solids of dimensions up to 15 mm for 6NZ15 pump, 10 mm for 6NZ18 pump and 32 mm for 10NZ22 pump. The density of pumped mixture must not exceed 1200 kg/m³.

Typical applications:

- for local dewatering in coal, ore and minerals mines as well as in power industry.

DESIGN

Submersible, vertical single-stage centrifugal pumps. The impeller is installed directly on the shaft end of a submersible electric motor. Motor is assembled over the pump. The hydraulic assembly is located under the motor and is separated from it by a mechanical seal in an oil chamber. The pump inlet is located at the axis under the pump and the delivery flange is directed horizontally, perpendicularly to the axis.

The motors are of IP 68 protection class and are designed to operate in submergence up to 20 m. A support is provided in lower part the pump in order to place the pump on the sump bottom.

The pump sets are equipped with electric protection systems against overload and dry-run. Bearing temperature sensors are provided.

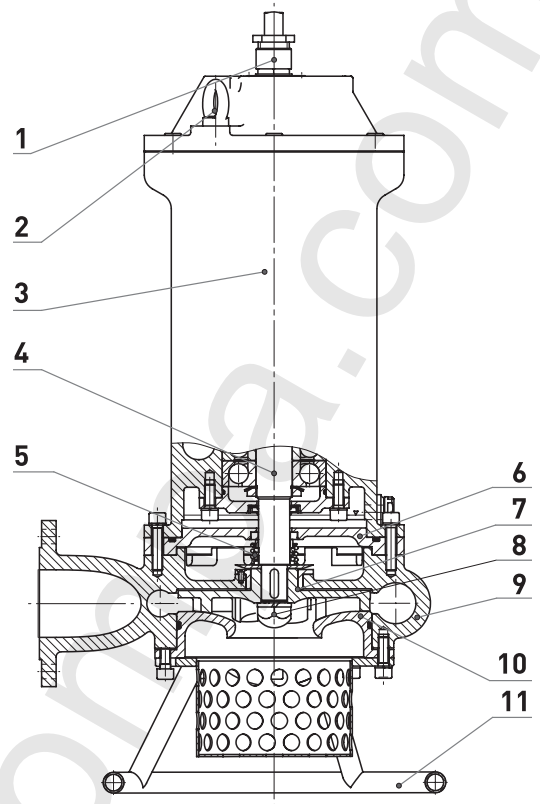
Pumps can be equipped with motors for various supply voltages 400V, 500V, 660V, 1140V and switchable 500V/1000V. The pumps are compliant with ATEX directive and are certified for operation in explosion hazardous areas – I M2c Ex dl. Mb.

MATERIALS OF CONSTRUCTION

Pump impellers are made of wear resistant alloy cast steel. The casings are made of cast iron. Nuts, bolts and pump supports are made of stainless steel.

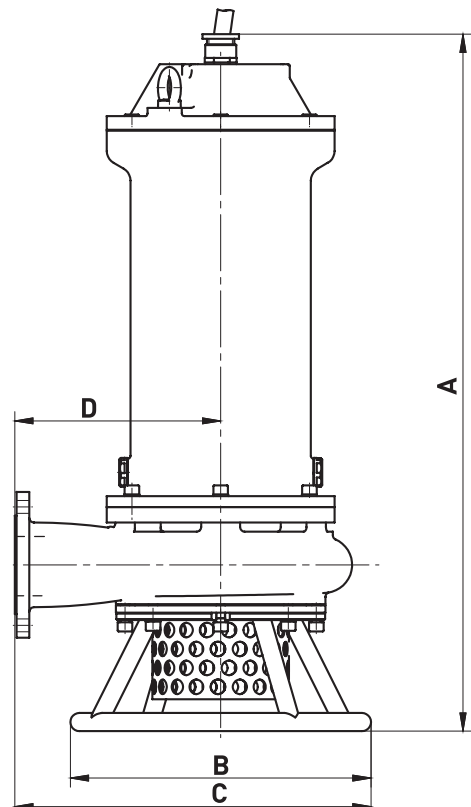
SECTIONAL VIEW / LIST OF PUMP PARTS

No.	Part name
1	Power supply cable
2	Handle
3	Motor
4	Shaft
5	Mechanical seal
6	Seal chamber
7	Impeller
8	Impeller nut
9	Delivery casing
10	Suction cover
11	Support

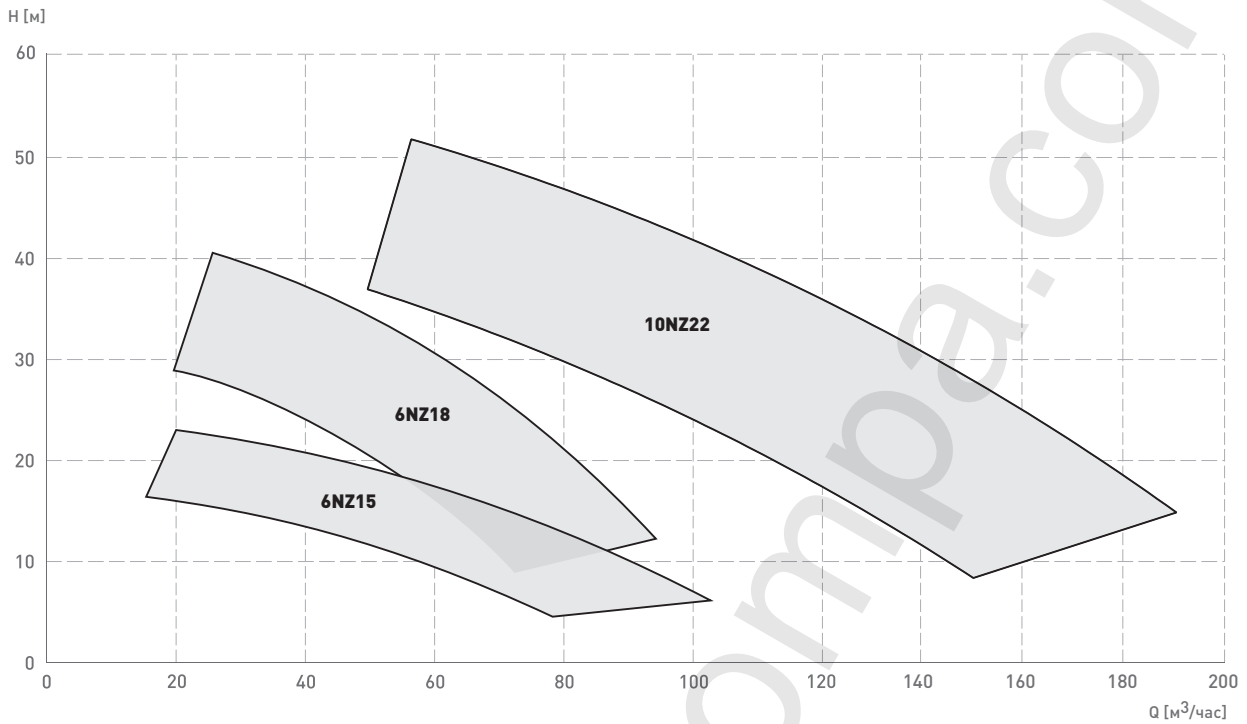


DIMENSIONS

Dimensions [mm]	Pump type		
	6NZ15	6NZ18	10NZ22
A	720	760	1100
B	330	330	520
C	390	390	564
D	225	226	304



RANGE OF OPERATION



NOMINAL PARAMETERS

Pump type	Capacity Q [m³/h]	Head H [m]	Rotation speed n [rpm]	Motor rated power P _s [kW]	Weight m [kg]
6NZ15-Ex	60	15	3000	5,5	87
6NZ18-Ex	45	27	3000	7,5	98
10NZ22-EX	125	37	3000	22	275
6NZ15	60	15	3000	5,5	87
6NZ18	45	27	3000	7,5	98
10NZ22	125	37	3000	22	275

The parameters are specified for clean water of density $\rho = 1000 \text{ kg/m}^3$ and temperature $T = 15^\circ\text{C}$.